



PodPack

Day Trip

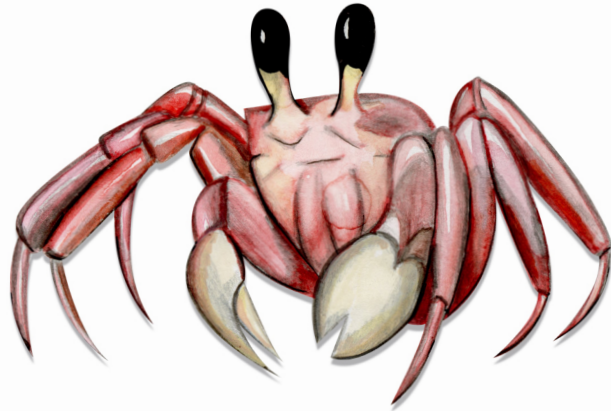
Season 1, Episode 37

Poems & Activities: *Little Dazzy Donuts*
Illustrations: *Dot Cherch*

July 2020

Day Trip

Welcome to the
Kids' Poetry Club
PodPack on the
Day Trip!



Every episode of *Kids' Poetry Club* comes with a free PodPack of activities based on that week's poems.

Just download it from kidspoetryclub.com, print it out, and join in the fun!

Check out the final page for information on how to submit your own poems and drawings to *Kids' Poetry Club*!

Activity 1: Design A Food Station

In the episode, Little Dazzy Donuts arrives at the Club to find that Queenie and Chicken are building a food station so that the hedgehog food isn't stolen by a neighborhood cat. Use the space below to design your own hedgehog food station that allows a hedgehog to reach the food, but prevents cats and dogs from getting to it first.



Activity 2: Plan A Day Trip

In the episode, Queenie looks through leaflets to help think through the options for where to go on a day trip. She and Chicken consider a castle, a lake, and a theme park. Think about where you live, and all of the options for places you could go for a day - where you would leave home in the morning, and get back in the evening. List the options below, and then circle the one you would most like to do.

“Are We There Yet?”

Just how long will it take us
to get to this place?
I'm bored - can't you tell
from the look on my face?
I'm yawning and wriggling,
stuck in my seat.
My legs are both twitching,
and I'm banging my feet.
I've finished my snacks
and drunk all my drink.
My brain has seized up,
and can no longer think.
It's ten minutes since we left,
so it feels a safe bet
that the news will be good
when I ask .. are we there yet?



Activity 4: Drawing

In the episode, Queenie was trying to choose between a day trip to a castle and a day trip to a lake. In the end, because of traffic, she decides that they should take a quiet country road, and see where it takes them. Think about where that road could go, and do a drawing below of where Queenie ends up for her day trip.

A large, empty rectangular box with a thin blue border, intended for a drawing. The box is positioned below the text and occupies most of the page's width and height.



Check out www.kidspoetryclub.com for more information on the weekly podcast and to listen to past episodes.

Submit your own poems (including for the competition) and drawings using the website:
<https://www.kidspoetryclub.com/joinin>

Check out more of Dot Cherch's art and illustrations at:
<https://www.dotcherch.com>